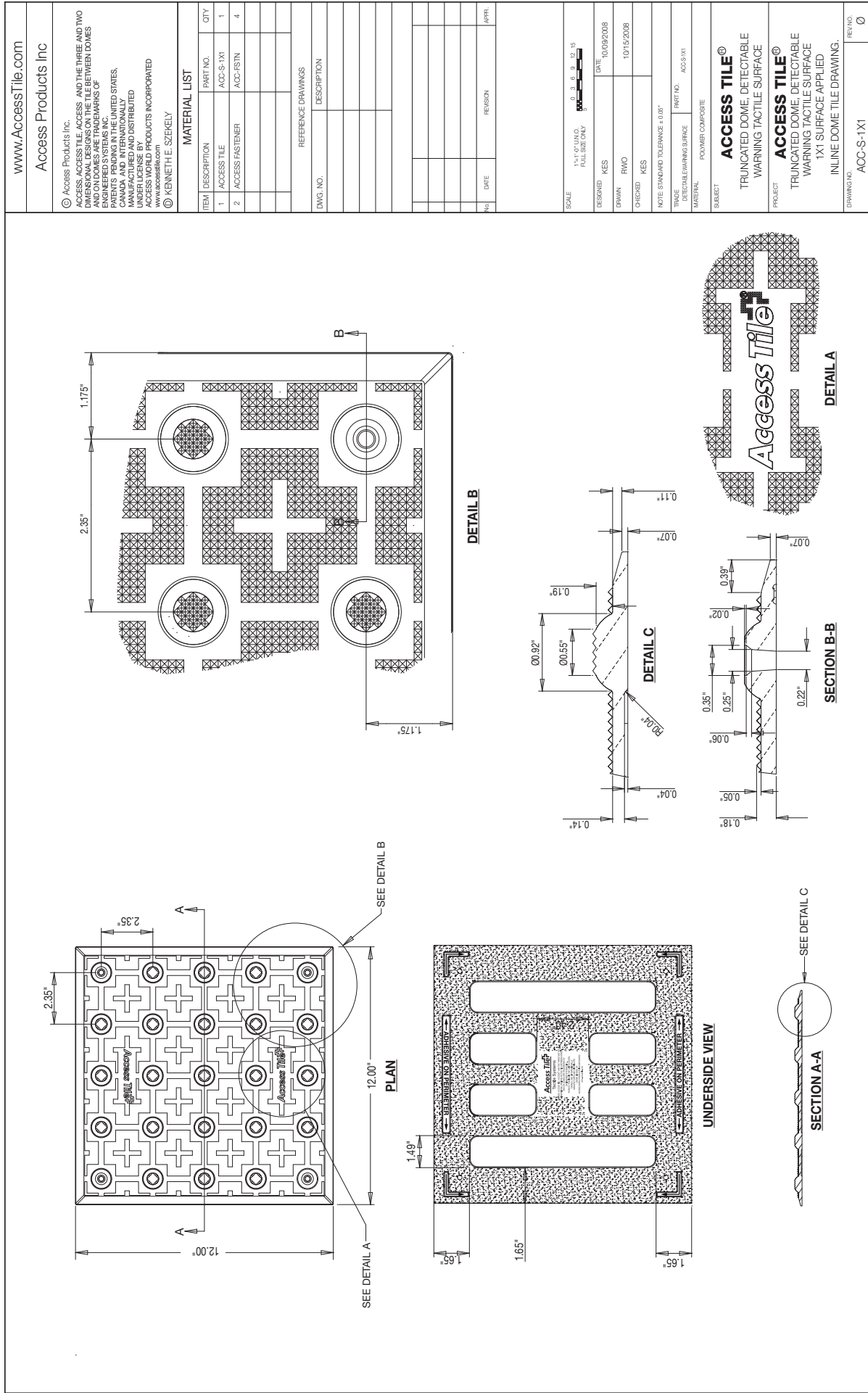


1' x 1'
SURFACE APPLIED | Upgrade existing concrete to comply with ADAAG detectable warning.
2.35" DOME SPACING



www.AccessTile.com			
Access Products Inc			
© Access Products Inc. ACCESS TILE, ACCESS AND THE THREE AND TWO DIMENSIONAL DESIGNS ON THE TILE BETWEEN DOMES AND ON DOMES ARE TRADEMARKS OF ACCESS PRODUCTS INC. IN THE UNITED STATES, CANADA AND INTERNATIONALLY. MANUFACTURED AND DISTRIBUTED BY ACCESS WORLD PRODUCTS INCORPORATED www.accessstile.com © KENNETH E. SZERVELY			
MATERIAL LIST			
ITEM	DESCRIPTION	PART NO.	QTY.
1	ACCESS TILE	ACC-S-1X1	1
2	ACCESS FASTENER	ACC-FS1N	4
REFERENCE DRAWINGS			
DESCRIPTION			
DWG. NO.			
NO.			
DATE			
REVISION			
APPR.			
SCALE			
1" = 8" D.W.G. FULL SIZE			
DESIGNED			
KES			
DATE			
10/09/2008			
DRAWN			
RVO			
DATE			
10/19/2008			
CHECKED			
KES			
NOTE			
STANDARD TOLERANCE ± 0.00"			
TRADE			
DETECTABLE WARNING SURFACE			
PART NO.			
ACC-S-1X1			
MATERIAL			
POLYMER COMPOSITE			
SUBJECT			
ACCESS TILE®			
TRUNCATED DOME, DETECTABLE			
WARNING TACTILE SURFACE			
PROJECT			
ACCESS TILE®			
TRUNCATED DOME, DETECTABLE			
WARNING TACTILE SURFACE			
1X1 SURFACE APPLIED			
INLINE DOME TILE DRAWING			
DRAWING NO.			
ACC-S-1X1			
REV. NO.			
0			