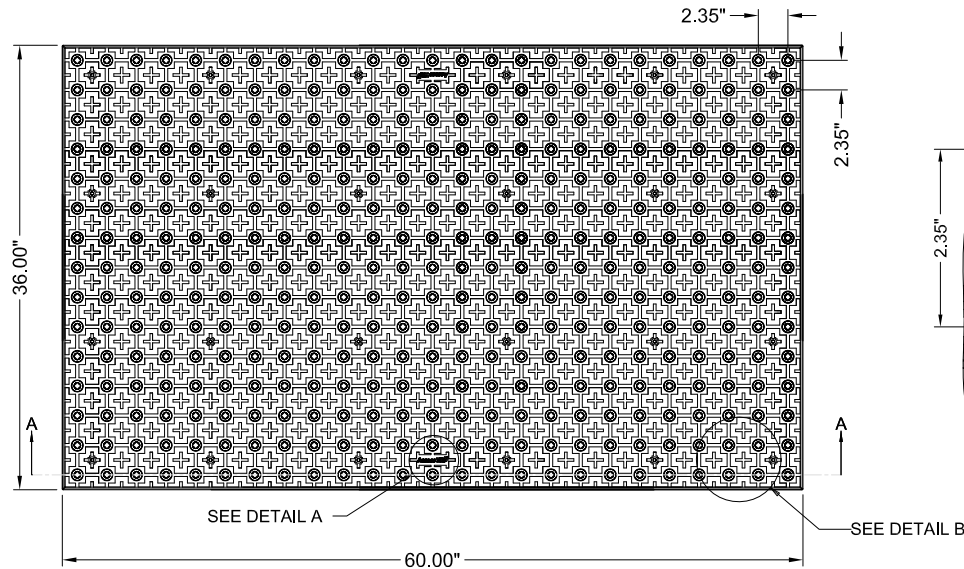
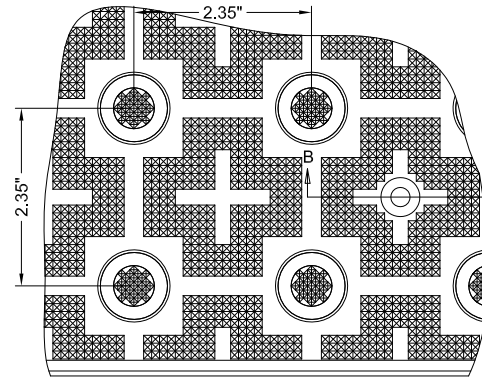


**3'X5'**

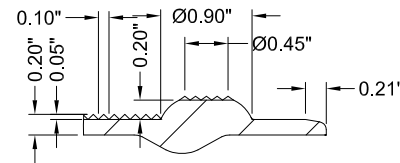
**REPLACEABLE CAST IN PLACE  
2.35" DOME SPACING**



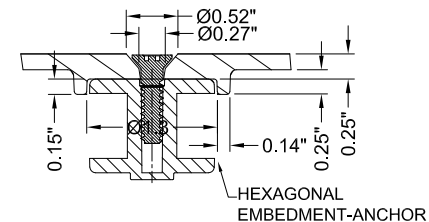
**PLAN**



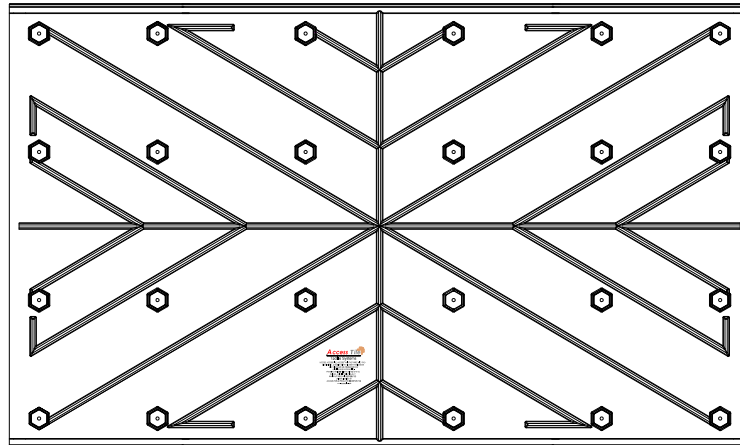
**DETAIL B**



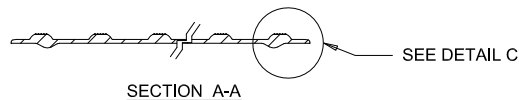
**DETAIL C**



**SECTION B-B**



**UNDERSIDE VIEW**



**SECTION A-A**



**DETAIL A**

www.AccessTile.com  
Access Products Inc

© Access Products Inc. ACCESS, ACCESS TILE, ACCESS + AND THE TWO AND THREE DIMENSIONAL DESIGNS ON THE DOMES ARE TRADEMARKS OF ENGINEERED SYSTEMS INC. PATENTS PENDING IN THE USA, CANADA AND INTERNATIONALLY. MANUFACTURED AND DISTRIBUTED BY ACCESS WORLD PRODUCTS INC. www.accesstile.com  
© KENNETH E. SZEKELY

**MATERIAL LIST**

ITEM	DESCRIPTION	PART NO.	QTY
1	ACCESS TILE	ACC-R-3X5	1
2	ANCHOR ASSEMBLY	ACC-R-ANCH	24

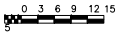
NOTE: ANCHOR ARE INCLUDED AND ASSEMBLED ON TILE.

**REFERENCE DRAWINGS**

DWG. NO.	DESCRIPTION

No.	DATE	REVISION	APPR.

SCALE 1"=1'-0" U.N.O. FULL SIZE ONLY



DESIGNED	KES	DATE	10/09/2008
DRAWN	RWD	DATE	10/15/2008
DRAWN	KES		

PROJECT MANAGER	
-----------------	--

TRADE	DETECTABLE WARNING SURFACE	PART NO.	ACC-R-3X5
-------	----------------------------	----------	-----------

MATERIAL POLYMER COMPOSITE

SUBJECT **ACCESS TILE®**  
TRUNCATED DOME, DETECTABLE WARNING TACTILE SURFACE

PROJECT **ACCESS TILE®**  
TRUNCATED DOME, DETECTABLE WARNING TACTILE SURFACE  
3X5 REPLACEABLE CAST IN PLACE INLINE DOME TILE DRAWING.

DRAWING NO.	ACC-R-3X5	REV. NO.	0
-------------	-----------	----------	---